

UPPER ROOF LAYOUT

Trusstech SA Pty Ltd
ABN: 40 1 3 18 22 140 16 High Street Dry Creek SA 5094 Ph: 08 8260 6006



OAKRIDGE
BUILDING SERVICES

PH : 83637222
FAX : 83637225

CONVENTIONAL TIMBER DETAILS

TRUSS DETAILS
TRUSSES & BRACING TO BE INSTALLED, ERECTED & BRACED IN ACCORDANCE WITH AS4440-2004

STABILIZER/HANGER @ 1800 CTS MAX UNO
BEARING WIDTH FOR TRUSSES 90mm UNO
TS = TRUNCATED STANDARD
TG = TRUNCATED GIRDER

S/B = SPEED BRACE
SV = SCOTCH VALLEY

NOTE: TRUSSES & JOISTS TO BE POSITIONED DIRECTLY OVER STUDS

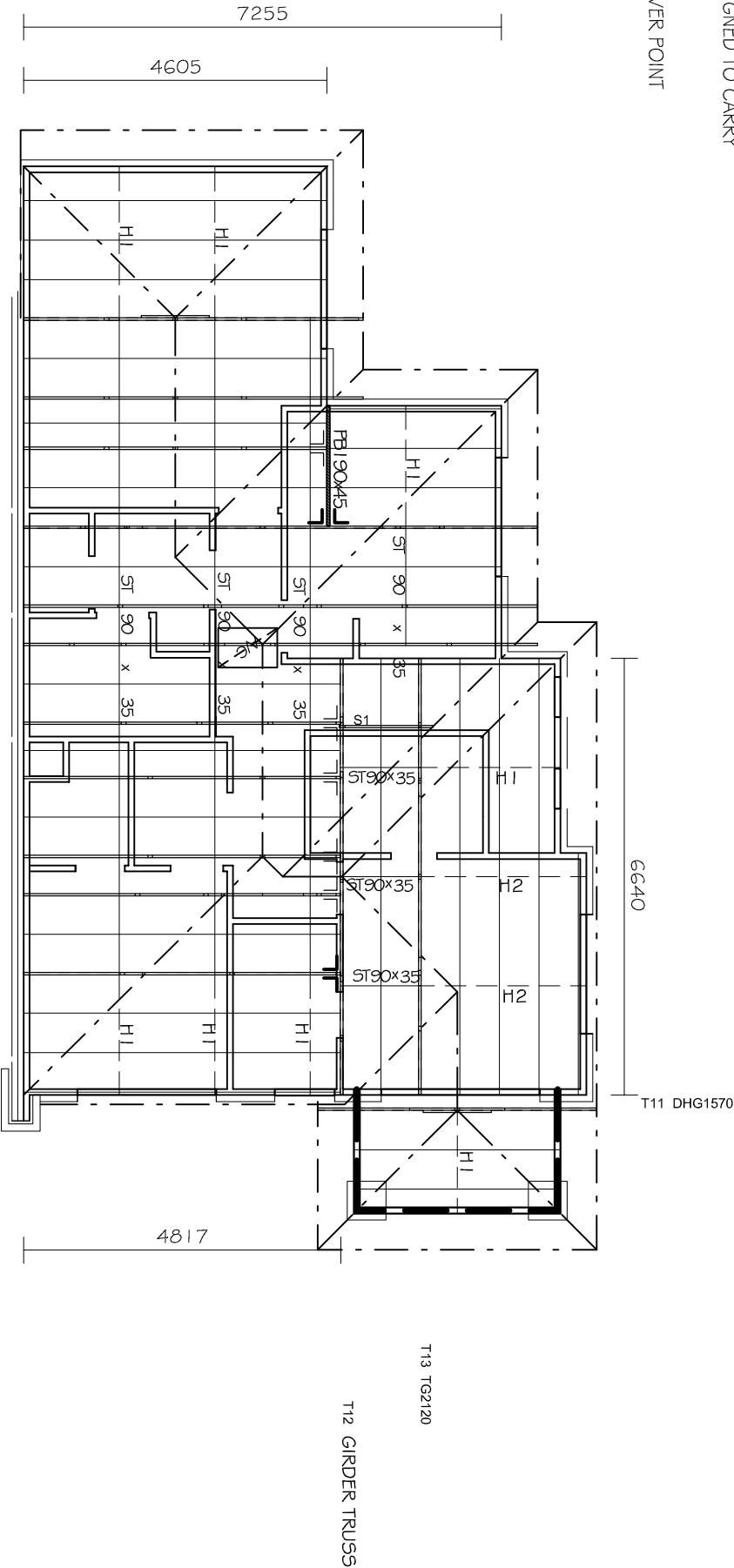
UNLESS SHOWN OTHERWISE ON LAYOUT, NO SPECIAL LOADS HAVE BEEN ALLOWED.

EG - A/C UNITS, SOLAR PANELS ETC.

MINIMUM BEARING WIDTH FOR TIMBER TRUSSES SHOULD BE 70MM. FOR BEARING WIDTH LESS THAN 70MM, CONFIRMATION FROM THE TRUSS ENGINEER SHOULD BE SOUGHT.

TRUNCATED GIRDER HAS BEEN DESIGNED TO CARRY CONVENTIONAL HIP END TIMBER (RAFTERS, HANGING BEAMS & HIPs)

X = INTERNAL SUPPORT / CANTILEVER POINT

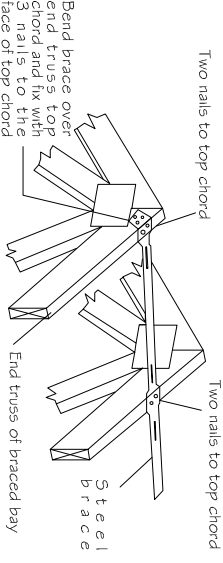


PURLINS : 90x45 MGP10 @ 900mm cts
generally with maximum endspans of 900mm
* JOINTS TO BE STAGGERED

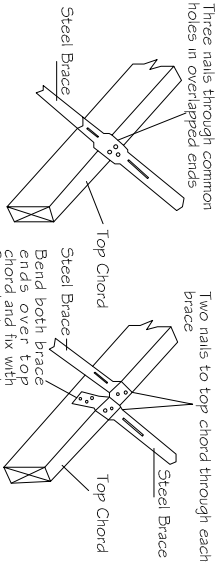
CEILING JOISTS 90x35 MGP10 @ 600 CTS UNO
HANGING BEAMS @ 1800 MAX CTS
RAFTERS 120x35 MGP10 @ 600 CTS FOR TILES & 1200 CTS FOR IRON UNO
HIPS LOWER 190x35 MGP10 UNO
HIPS UPPER 120x35 MGP10 UNO
VT = VALLEY TRIM 120x35 MGP10
RP = RAKING PLATE 190 x 45 MPG10
RIDGE 140x35 MGP10 UNO
UNDERPURLINS 130x63 LVL
COLLAR TIES 90x35 M10 @ 1200 cts < 4.2m
120x35 M10 @ 1200 cts > 4.2m
JOINT GROUP = JD5
ALL MATERIALS ALLOWED AS PER AS 1684.2-2010

HANGERS:
H1 = 120x35 MGP10
H2 = 140x35 MGP10
H3 = 190x35 MGP10
H4 = 190x45 MGP10

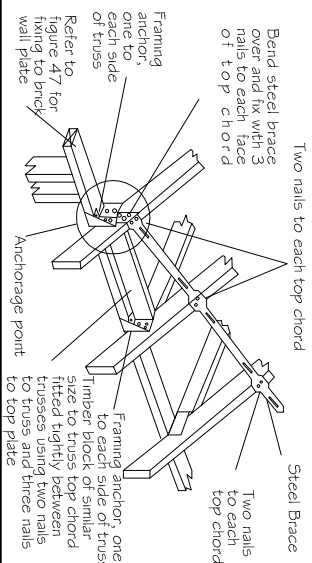
SPEED BRACE FIXING DETAILS AT APEX



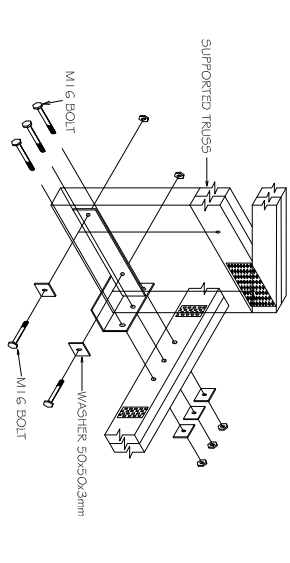
SPEED BRACE SPLICING DETAILS



SPEED BRACE FIXING DETAILS AT HEEL



HIGH-LOAD TRUSS BOOT



TRUSS BOOT

